

VMWARE VREALIZE OPERATIONS MANAGEMENT PACK FOR

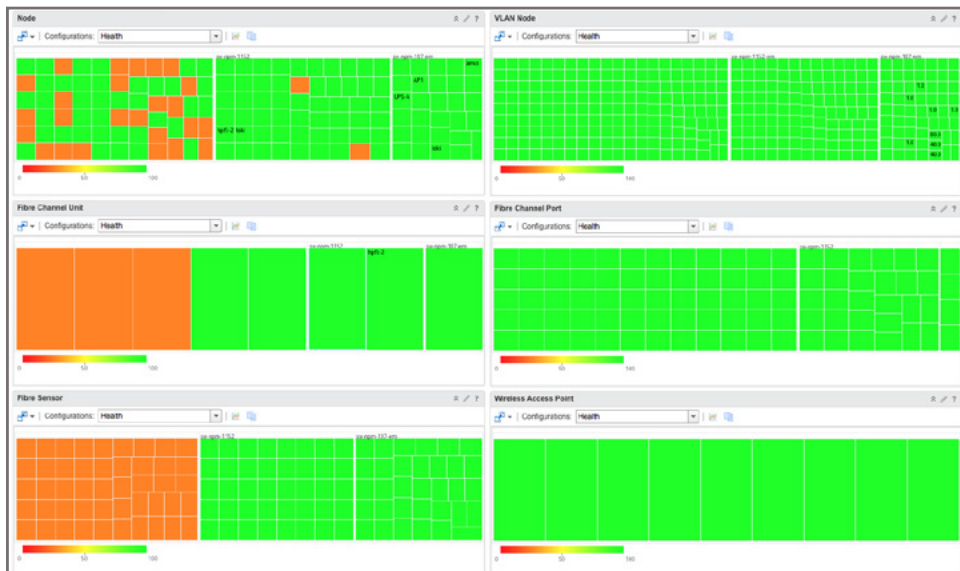
SolarWinds



The Blue Medora Management Pack for SolarWinds collects performance data from critical SolarWinds resources and makes it available within the VMware vRealize Operations (vROps) monitoring platform.

Extend vRealize Operations to SolarWinds

The Blue Medora vRealize Operations Management Pack for SolarWinds extends VMware vROps by enabling customers to gain comprehensive visibility and insights into the performance, capacity, and health of their network.



With the Management Pack for SolarWinds, administrators are able to manage, monitor, and troubleshoot their network stack within a single console. The Management Pack connects remotely to each supported SolarWinds instance to retrieve data regarding SolarWinds resources and their performance.

Expose Key SolarWinds Performance Metrics in vROps

- Fibre Channel Sensor Status
- Rogue Access Point Count
- Wireless Availability
- Interface Throughput per Node

Supported Platforms

vRealize Operations
(Enterprise Edition Only)
Version 6.x

SolarWinds NPM
Software versions 10.4+
Orion REST API 2.0+

Additional platforms are added periodically. Visit bluemedora.com for the most up-to-date platform support.

KEY ADVANTAGES

- **End-to-end visibility.** Identify potential issues in your network stack before they spread to the next layer of the stack.
- **Machine learning capabilities.** Extend vRealize Operations' capabilities to SolarWinds.
- **Capacity and health awareness.** Stay ahead of issues with vROps' predictive analytics in SolarWinds. The Management Pack provides capacity definitions to fully exploit vRealize Operations 6.x.
- **Relationship mapping.** Instantly view relationships within SolarWinds, out to the virtual layer and beyond.

AVAILABLE NOW

This Management Pack is now available for purchase. Learn more and download a fully supported trial at bluemedora.com.

VMWARE VREALIZE OPERATIONS MANAGEMENT PACK FOR SolarWinds



Centralize your infrastructure monitoring by leveraging your existing investment in vRealize Operations.

See More with Operational Dashboards

The Management Pack for SolarWinds enhances VMware vRealize Operations Manager by adding the following capabilities:

- **Operations Dashboard.** Provides at-a-glance views into health, risk and efficiency of your virtualized as well as non-virtualized network stack.
- **Workload Details View.** Get in-depth analysis of what is impacting performance and health of your network workloads.
- **Proactive Smart Alerts.** Automated root cause analysis provides advanced notification of building issues with network stacks before end users are impacted.
- **Heat Map Views.** Get visibility into all areas of your network to identify resource constraints and bottlenecks.

Top-10 Node Response Time

Name	Response Time	Packet Loss
sw-6224-s2	123 milliseconds	0 %
sw-6224-s2	95 milliseconds	0 %
dashboard.meraki.com	71 milliseconds	0 %
SW-5524-S1-1	68 milliseconds	0 %
Server Room Monitor	15 milliseconds	0 %
SW-5548-S1-1	14 milliseconds	0 %
SW-5548-S1-1	13 milliseconds	0 %

Page 1 of 15 | Displaying 1 - 10 of 148

Top-10 Node Traffic

Name	Active Interface Total Throughput	Active Interface In Throughput	Active Interface Out Throughput
hpf-c-2	1.98 gbps	917.55 mbps	931.17 mbps
hpf-c-1	1.86 gbps	896.4 mbps	908.08 mbps
hpf-c-2	1.85 gbps	929.48 mbps	925.32 mbps
SW-6224-S1-1	339.6 mbps	199.77 mbps	139.83 mbps
SW-6224-S1-1	338.74 mbps	199.68 mbps	139.06 mbps
SW-6224-S1-1	338.38 mbps	198.22 mbps	140.16 mbps
SW-6224-S1-1	337.93 mbps	199.05 mbps	138.88 mbps

Page 1 of 15 | Displaying 1 - 10 of 148

Analyze Health and Relationships

View alerts, health, status, and relationships for various SolarWinds resources to receive a broad picture of your entire system. Understand your network workloads today and prepare for tomorrow.

NPM Selector

Name	Adapter Type	Object Type	Policy	Collection Status
Capacitor Cel...	SolarWinds NPM	SolarWinds NPM Fibre Channel Se...	vSphere Solu...	...
sw-6224-s2	SolarWinds NPM	SolarWinds NPM Node	vSphere Solu...	...
20 Users Via...	SolarWinds NPM	SolarWinds NPM VLAN Node	vSphere Solu...	...
10: SW-5548...	SolarWinds NPM	SolarWinds NPM VLAN Node	vSphere Solu...	...
20: SW-5324-1	SolarWinds NPM	SolarWinds NPM VLAN Node	vSphere Solu...	...
120: sw-5548...	SolarWinds NPM	SolarWinds NPM VLAN Node	vSphere Solu...	...
1.0	SolarWinds NPM	SolarWinds NPM VLAN Node	vSphere Solu...	...

Page 1 of 15 | Displaying 1 - 50 of 747

Alert

Status	Criticality Level	Object Name	Alert Info	Alert Impact	Object Type	Type	Sub-Type
...	...	sw-6224-s2	Interface is d...	Health	SolarWinds N...	Application Al...	Configurat
...	...	sw-6224-s2	Interface is d...	Health	SolarWinds N...	Application Al...	Configurat
...	...	sw-6224-s2	Interface is d...	Health	SolarWinds N...	Application Al...	Configurat
...	...	sw-6224-s2	Interface is d...	Health	SolarWinds N...	Application Al...	Configurat
...	...	sw-6224-s2	Interface is d...	Health	SolarWinds N...	Application Al...	Configurat

Page 1 of 2 | Displaying 1 - 50 of 89

Health

sw-6224-s2

100

Page 1 of 1 | Displaying 1 - 1 of 1

KPIs

Status Node status is Up, One or more interfaces are Down.	Memory Usage ?
Response Time 151 milliseconds	Packet Loss 0 %
Active Interface Total Throughput 157.19 mbps	Active Interface Total Bandwidth 22.38 gbps
Active Interface Total Packets Out 16.56 per ms	Active Interface Total Packets In 16.98 per ms