

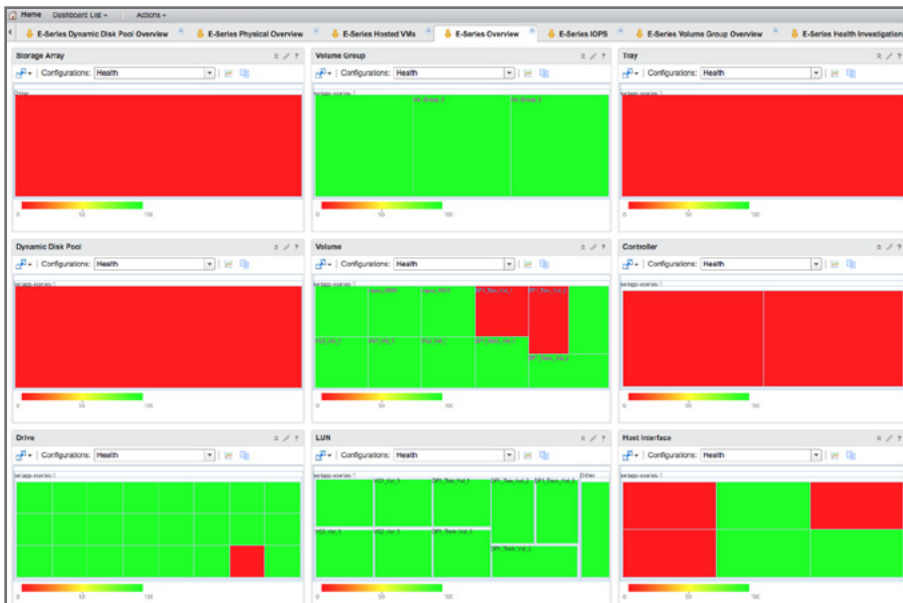
# NetApp E-Series



The Blue Medora vRealize Operations (vROps) Management Pack for NetApp E-Series provides end-to-end visibility, analytics and capacity planning for workloads running on NetApp E- and EF-Series storage systems. The Management Pack for NetApp E-Series utilizes the vRealize Operations analytics engine to unveil deep insights into NetApp E-Series capacity and performance issues.

## Extend vROps to NetApp E-Series

The Blue Medora Management Pack for NetApp E-Series enables you to ingest data from NetApp E-Series storage devices and integrate data feeds with vSphere data being pulled into VMware vRealize Operations. This Management Pack provides your storage team with a robust tool for understanding and monitoring the physical infrastructure and architecture of NetApp E-Series systems.



## Expose Key NetApp E-Series Performance Metrics in vROps

- Maximum IOPS
- IOPS Utilization
- Group IOPS Utilization
- Volume Group Capacity
- Dynamic Disk Pool Subscription

## Storage Capacity at All Levels

Analyze your storage capacity for all aspects of your SAN with 15 out-of-the-box capacity definitions.

## Supported Platforms

**vRealize Operations**  
(Advanced or Enterprise Edition)  
Version 6.x

**NetApp E-Series**  
NetApp E-Series and EF-Series Hardware  
SANtricity Web Service for E-Series Proxy 1.3+

Additional platforms are added periodically. Visit [bluemedora.com](http://bluemedora.com) for the most up-to-date platform support.

## KEY ADVANTAGES

- **Enterprise-wide visibility into NetApp E-Series devices.** Enable NetApp E-Series related performance, health, and availability metrics within vROps. Views and resource kinds are targeted at providing NetApp capacity analysis.
- **Relationship mapping between NetApp E-Series and VMware layers.** Greatly reduce troubleshooting times and simplify security & compliance management.
- **Integration between vROps and NetApp delivers reduced MTTI & MTTR.** Troubleshoot, diagnose, and analyze issues utilizing our customized, out-of-the-box dashboards.

**AVAILABLE NOW**

This Management Pack is now available for purchase. Learn more and download a fully supported trial at [bluemedora.com](http://bluemedora.com).

VMWARE VREALIZE OPERATIONS MANAGEMENT PACK FOR

# NetApp E-Series



Centralize your infrastructure monitoring by leveraging your existing investment in vRealize Operations.

## NetApp E-Series to VMware Relationship Mapping

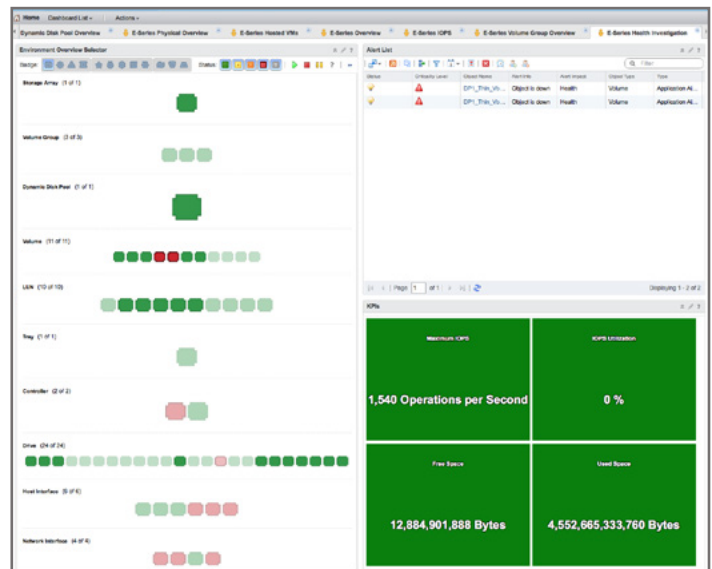
The Management Pack for NetApp E-Series enhances VMware vRealize Operations by adding the following capabilities:

### Integrates Critical NetApp E-Series Resources

- Array
- Controller
- Drive
- Dynamic Disk Pool
- Host Interface
- Network Interface
- LUN
- Tray
- Volume Group
- Volume

### Enables vROps Functionality for NetApp E-Series Resources

- Predictive Analytics
- Cross-Tier Analysis
- Dynamic Thresholds
- Correlated Alerts



## vRealize the Power of Metrics

The Management Pack collects over 400 NetApp E-Series metrics including health, availability, and performance. Synthetic metrics like memory health, CPU health, and disc health provide unique health insights that are exclusive to the Management Pack. Every metric provided can be used in out-of-the-box custom reports available to schedule daily, weekly, or monthly email delivery. Detailed alert screens provide recommendations to reduce time spent troubleshooting.

