

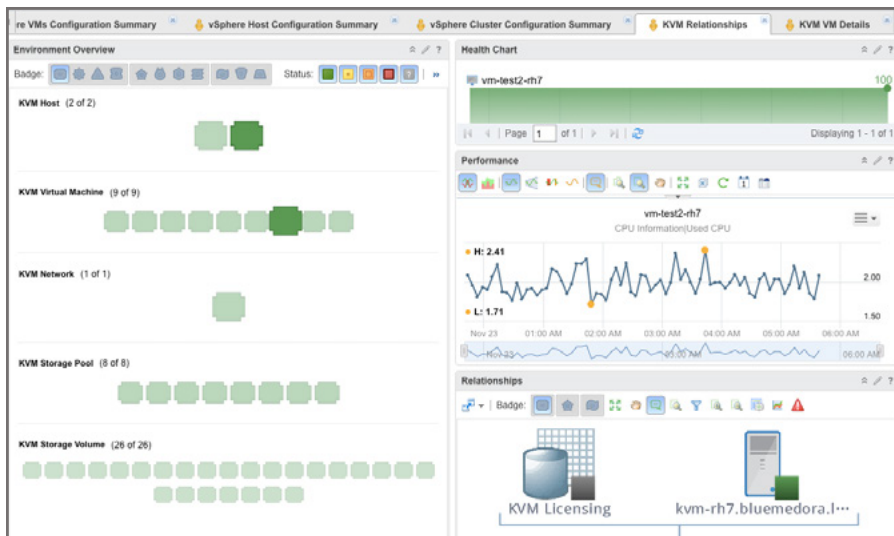
# VMWARE VREALIZE OPERATIONS MANAGEMENT PACK FOR KVM



The Management Pack for KVM extends the VMware vRealize Operations (vROps) monitoring platform by enabling customers to gain comprehensive visibility and insights into the performance, capacity, and health of their KVM workloads.

## Extend vRealize Operations to KVM

The Blue Medora vRealize Operations Management Pack for KVM collects performance data from critical KVM resources within the end user's KVM landscape and makes it available in vRealize Operations. With the Management Pack for KVM, administrators are able to manage, monitor, and troubleshoot their entire KVM environment within a single console.



With the vRealize Operations Management Pack for KVM, KVM customers are able to gain comprehensive visibility and insights into the performance, capacity, and health of their KVM workloads. The Management Pack for KVM automatically detects and creates relationships between KVM hosts and virtual machines, storage pools and volumes, providing visibility for your entire KVM deployment.

## Expose Key KVM Performance Metrics in vRealize Operations

- CPU Usage
- Memory Usage
- Storage Capacity
- Storage IOPS
- Storage Throughput
- Network IOPS
- Network Throughput
- Power State

## Supported Platforms

**vRealize Operations**  
(Advanced or Enterprise Edition)  
Version 6.x

**KVM**  
KVM environments running  
libvirt version 0.9.12+

Additional platforms are added periodically. Visit [bluemedora.com](http://bluemedora.com) for the most up-to-date platform support.

## KEY ADVANTAGES

- **Alerting capabilities.** Degraded conditions in your KVM environment trigger the Management Pack's symptom-based alerts.
- **Health awareness.** Stay ahead of issues with vROps' predictive analytics in KVM. Gain detailed insights into the applications running in your KVM environment.
- **Plan expansion and consolidation.** Understand your current workload with at-a-glance views of capacity definitions for all virtual machines and hosts.
- **Relationship mapping.** Instantly view relationships between your KVM virtual storage, network, and compute.
- **Action framework controls.** Use action framework to perform power functions on your KVM virtual machines.

**AVAILABLE NOW**

This management pack is now available for purchase. Learn more and download a fully supported trial at [bluemedora.com](http://bluemedora.com).

# VMWARE VREALIZE OPERATIONS MANAGEMENT PACK FOR KVM

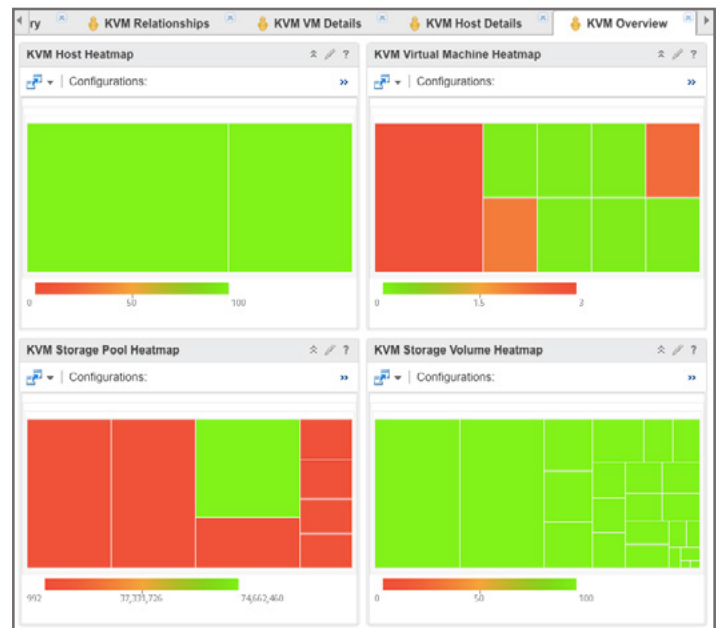


Centralize your infrastructure monitoring by leveraging your existing investment in vRealize Operations.

## See More with Operational Dashboards

The Management Pack for KVM enhances VMware vRealize Operations Manager by adding the following dashboards:

- **KVM Overview.** Displays heat maps depicting the overall health of KVM hosts, virtual machines, storage pools, and storage volumes.
- **KVM Relationships.** Select a KVM resource from the Environment Overview to view key performance metrics, health, and relationships regarding that resource.
- **KVM Host Details.** Users can view alerts, memory, health, and relationships resource information once KVM Host is selected.
- **KVM VM Details.** Select a KVM Virtual Machine to view alerts, key metrics, health and relationships information relating to that resource.



## Harness the Power of KVM

Collect over 80 KVM metrics including health, availability, and performance. Every metric provided in the Management Pack for KVM can be used in custom reports. Create custom reports and schedule daily, weekly, or monthly email delivery, or choose from out-of-the-box reports like KVM Storage & Network Report.

