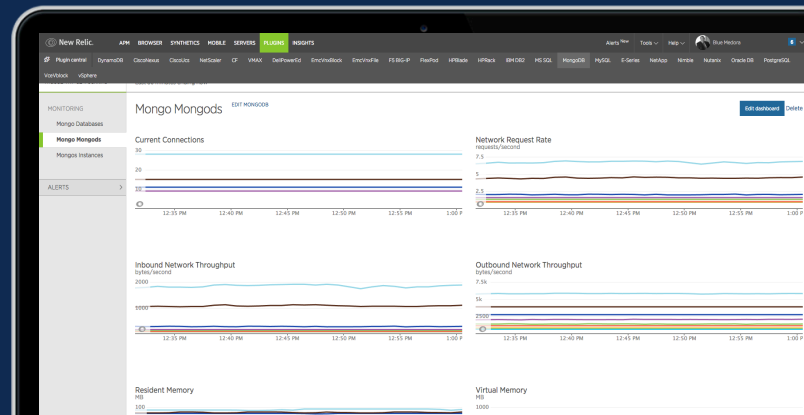


New Relic Plugin for MongoDB

Key Benefits

- 175+ health, availability and performance metrics
- Immediate, automatic alerts to identify issues
- New Relic Insights enabled for deeper analysis



Gain Visibility Into MongoDB Performance

From databases to Mongods to instances, the Blue Medora MongoDB Plugin gives you more visibility into performance so you can optimize troubleshooting and stop issues from becoming widespread problems.

The plugin extends your monitoring with hundreds of additional metrics, including connections, virtual memory and object size.

Access Instant, Actionable Alerts

Because the MongoDB Plugin integrates with New Relic Alerts, pinpoint issues quicker with access to more alerts and notifications about your system's performance.

The integration includes system-configured thresholds, as well as the ability to define your own, in order to further improve your troubleshooting process.

Extend Visibility with New Relic Insights

Take a deeper dive into data about your MongoDB workloads and performance with New Relic Insights, which is seamlessly integrated with Blue Medora's plugin. As a result, you gain access to more metrics than ever before to truly understand the health and availability of your databases.

In addition, NRQL queries make it easy to create custom data apps so you can access the data and metrics that you need in order to optimize your performance and ensure your environment performs at optimal health at all times.

Plugin Requirements

Before installing and configuring the plugin, ensure your system meets the following requirements:

New Relic

A New Relic Account

MongoDB

The plugin supports the following versions of MongoDB:

- MongoDB 3.0+ (3.0, 3.2)

Get your free trial today at bluemedora.com/tryNR