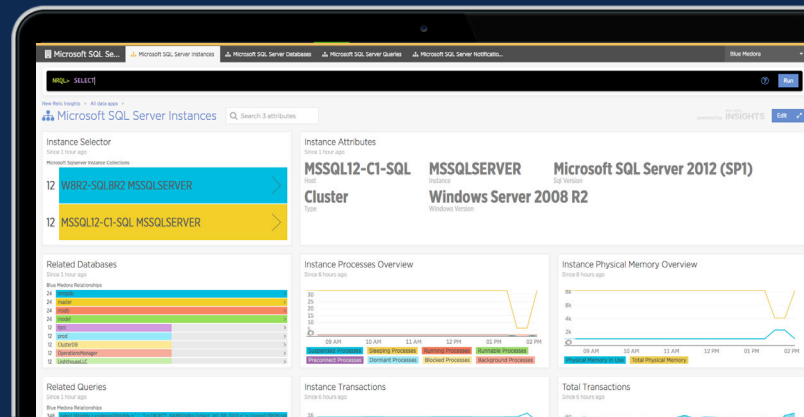


New Relic Plugin for Microsoft SQL Server

Key Benefits

- 50+ health, availability and performance metrics
- Immediate, automatic alerts to identify issues
- New Relic Insights enabled for deeper analysis



Drill Deeper into Database Performance

Using out-of-the-box dashboards with the Blue Medora Plugin for Microsoft SQL Server, gain deep insight into the performance of your databases. Access key metrics like average execution time, physical memory and transactions to gain visibility into the performance of your Microsoft SQL Server and pinpoint issues before they arise.

In addition, the Blue Medora Plugin for Microsoft SQL Server includes a set of intuitive, graph-based monitoring dashboards to extend visibility even further.

Receive Immediate Alerts

With a seamless integration with New Relic Alerts, ensure that your platform is always running at top-tier performance.

The Blue Medora Plugin for Microsoft SQL Server features system-configured thresholds, and the ability to define your own, to get immediate and automatic alerts when issues arise. Combine alerts with New Relic Insights to dive deep into performance data and identify key areas to improve for optimal operation of your platform.

Access New Relic Insights for Deeper Analysis

Take your visibility one step further with an integration with New Relic Insights. With Insights, gain access to more than 50 health, availability and performance metrics that help you drill down into any Microsoft SQL Server database to truly understand its performance. In addition, NRQL queries make it easy to create custom data apps to get key information in a format you can use.

Plugin Requirements

Before installing and configuring the plugin, ensure your system meets the following requirements:

New Relic

A New Relic Account

Microsoft SQL Server

The plugin supports the following versions of Microsoft SQL Server:

- MS SQL 2008 R2
- MS SQL 2012
- MS SQL 2014
- MS SQL 2016

Get your free trial today at bluemedora.com/tryNR