

# We know monitoring. We live integration.

Meet Blue Medora the company that set the standard for enterprise-grade integration for IT monitoring.



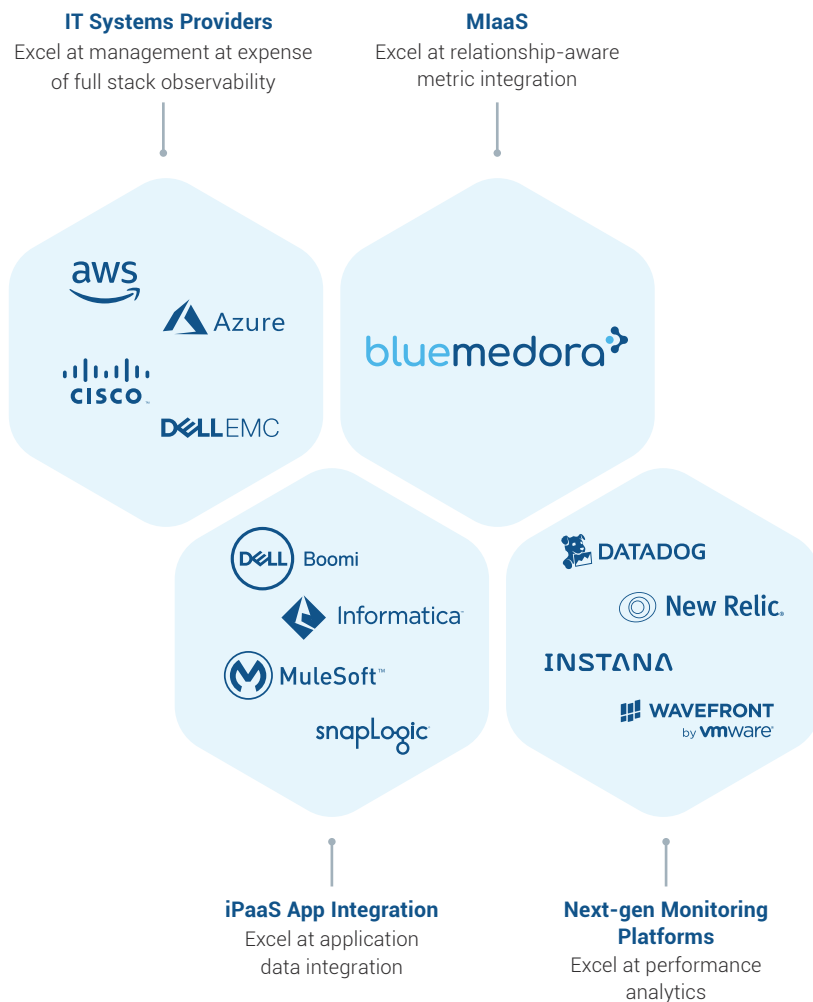
We believe all the advancements in next generation monitoring, like real-time analytics and machine learning are only as good as the data that fuels them.



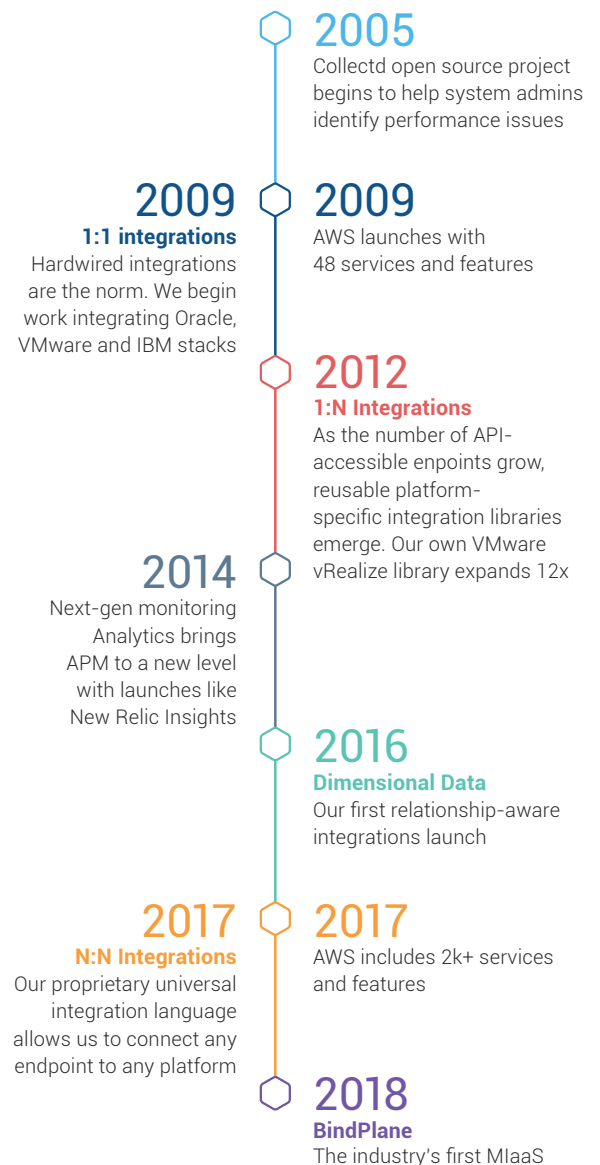
We know from experience that the only way to make next-gen monitoring accessible to the largest enterprises in the middle of digital transformation is to take an agile, scalable approach to integrating health and performance data.

## Meet BindPlane: the industry's first MaaS

We've taken an iPaaS-like approach to connect more than 100 of the most commonly monitored IT systems to the most popular IT monitoring and analytics platforms. We call it, BindPlane, and it's the first the IT monitoring integration service (MaaS).

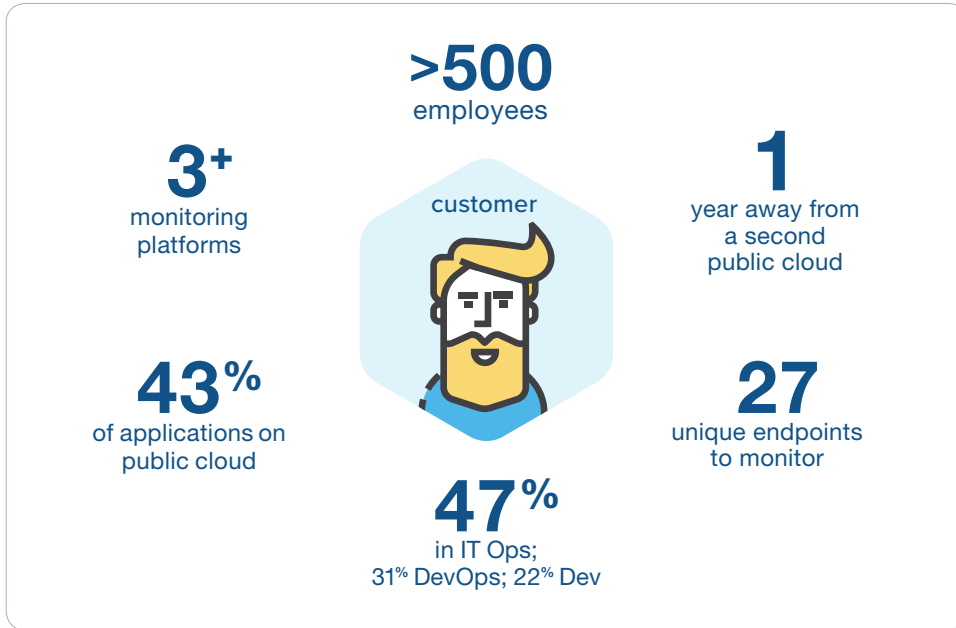


## A history of integration innovation



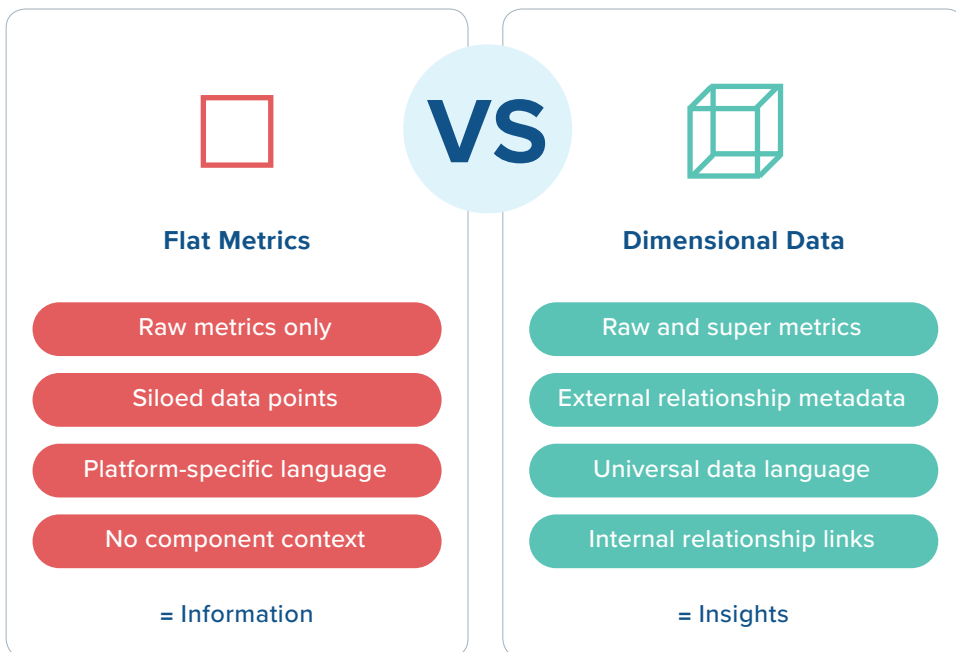
## Our customer profile

Our customers are transforming—cloud, IoT, Big Data, DevOps adoption all drive new ways of monitoring the IT systems that support them. We allow a flexible, agile approach for our customers to integrate monitoring in a way that's future proof. Large enterprises are taking on digital transformation, but it's a gradual process.



## Dimensional data vs flat metrics

We believe that data is dimensional, not flat, and health and performance metrics must include their relationship to other components in the IT stack to truly provide insights.



Learn more at [bluemedora.com](https://bluemedora.com)



Thanks to the visibility Blue Medora provides, we can now discover the symptoms of downtime between 70 to 80 percent faster.

– RICHARD ESTEVE  
Technical Leader  
Orange Business Services



Most monitoring vendors allow their customers to develop their own integrations so that they don't have to wait for the vendor to build it. BindPlane can take on this function for the vendors and enterprises, freeing them to develop more valuable features and capabilities.

– 451 RESEARCH



When you go from the dashboard that's provided by the monitoring platform to the one that's provided by Blue Medora you don't see a difference. I mean it is fully integrated. The look and feel are the same.

– MARTY YURCHESHEN  
Senior Systems Engineer  
Alliant Credit Union